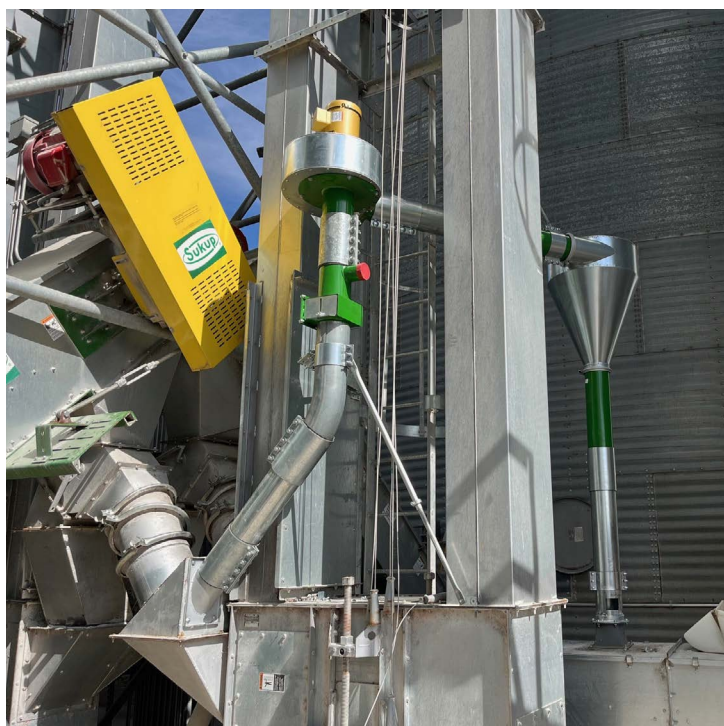


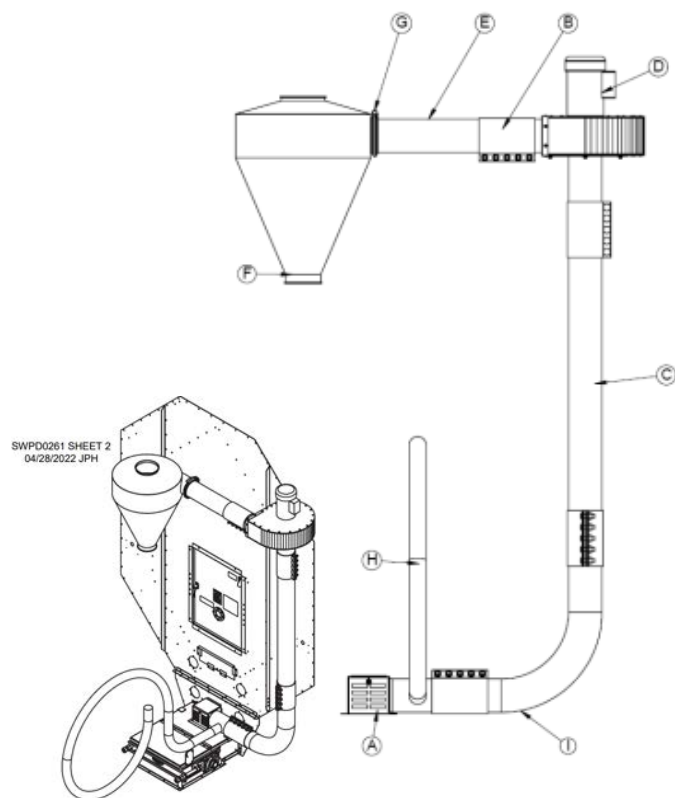
ASPIRATOR



Aspirator shown pulling from the inlet transition of a wet-grain elevator and directing particulate into a dry-grain drag conveyor, bypassing grain dryer and keeping the site cleaner.

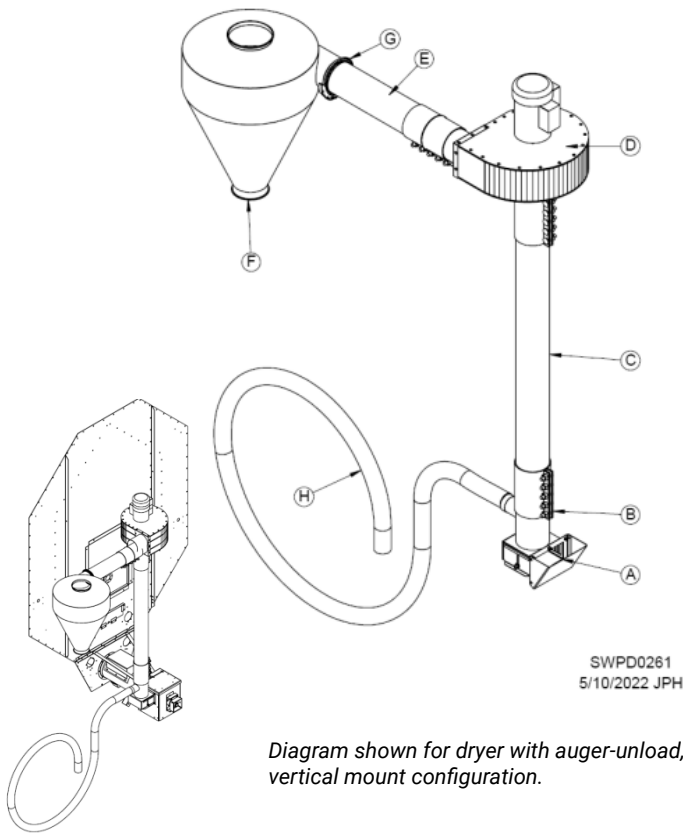
The Aspirator is a specialized grain-cleaning device designed to efficiently pull bees' wings and other lightweight debris from the grain stream. It can be installed anywhere grain is falling, such as dryer unloads and bucket elevator transitions, making it a versatile addition to grain-handling systems. Its fan blade is engineered to minimize buildup, ensuring consistent performance with minimal maintenance. While it effectively removes light contaminants, it does not extract heavy fines, preserving the quality of the grain. Additionally, an access point allows for easy connection to a hose, enabling quick cleanup of light fines in the surrounding area.

- Removes bees' wings and lightweight debris from the grain stream, improving grain cleanliness
- Versatile installation at any point where grain is falling, such as dryer unloads and bucket elevator transitions
- Reduces buildup with a specially designed fan blade, minimizing maintenance needs
- Does not remove heavy fines, ensuring grain quality is maintained
- Includes an access point for a hose, allowing for easy cleanup of light fines in the surrounding area



ITEMS	DESCRIPTION
A	Aspirator Box with Slides
B	6", 5 Bolt Compression Coupling (4 required)
C	6" Galvanized Tubing (per foot)
D	Fan & Motor Assembly - 1PH
D	Fan & Motor Assembly - 3PH
E	Adapter Tube
F	Aspirator Cyclone
G	6" Quick Disconnect
H	25', 3" Clean Out Hose
I	6" Galvanized Elbow, 90 Degree
J*	6" Adjustable Bipod Support Brackets - Legs adjust 15"-25"
K*	6" Adjustable Bipod Support Brackets - Legs adjust 30"-45"
L*	6" Adjustable Quadpod Support Brackets - Legs adjust 15"-25"
M*	6" Adjustable Quadpod Support Brackets - Legs adjust 30"-45"

Diagram shown for dryer with conveyor-unload, horizontal mount configuration.



ITEMS	DESCRIPTION
A	Aspirator Base Assembly
B	6", 5 Bolt Compression Coupling (3 required)
C	6" Galvanized Tubing (per foot)
D	Fan & Motor Assembly - 1PH
D	Fan & Motor Assembly - 3PH
E	Adapter Tube
F	Aspirator Cyclone
G	6" Quick Disconnect
H	25', 3" Clean Out Hose
J*	6" Adjustable Bipod Support Brackets - Legs adjust 15"-25"
K*	6" Adjustable Bipod Support Brackets - Legs adjust 30"-45"
L*	6" Adjustable Quadpod Support Brackets - Legs adjust 15"-25"
M*	6" Adjustable Quadpod Support Brackets - Legs adjust 30"-45"

Note: Tubing is used to position the fan and optional cyclone in the desired location for optimal performance and convenience.



Internal baffle helps prevent kernels from being pulled out.



Sukup Manufacturing Co. | www.sukup.com

Box 677 1555 255th St. | Sheffield, IA 50475-0677 | ph 641.892.4222
fx 641.892.4629 | info@sukup.com

Distribution Centers

Arcola, IL 61910
980 E. State Rte. 133
ph 217.268.3026
illinois@sukup.com

York, NE 68467
2311 Division St.
ph 402.534.1108
nebraska@sukup.com

Cameron, MO 64429
7426 NE 352nd St.
ph 816.649.2226
missouri@sukup.com

Defiance, OH 43512
7724 Rte. 66 N.
ph 419.784.9871
ohio@sukup.com

Jonesboro, AR 72403
204 Best Industrial Dr.
ph 870.932.7547
arkansas@sukup.com

Watertown, SD 57201
2701 Piper Ave.
ph 605.882.6697
southdakota@sukup.com